

SHADOWS ON THE EMERALD NECKLACE

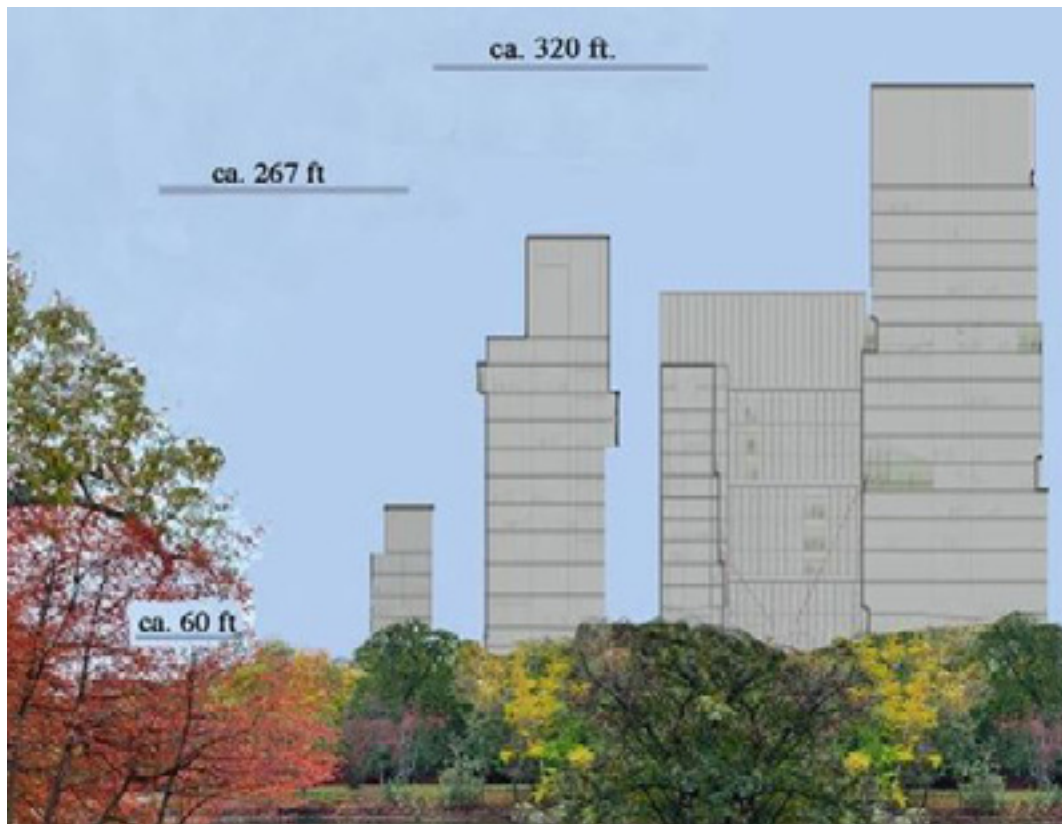
MEETING PLACE

Terrace between TimeOut Market and the Trillium pavilion at 401 Park (formerly the Landmark Center)

TIME

4pm, Monday, March 20 / Rain date: 4pm, Tuesday, March 21aa

Please join us for a spring-equinox WALK-SHOP* to examine the extent of new shadow cast on the Emerald Necklace parks by the proposed Longwood Place development (305 Brookline Avenue). We'll have local experts along to explain historic and environmental impacts of the shadow on the park and notable landmarks along the way.



Our walk-shop will take less than an hour. Please call or text (617) 794-9860 for more information or with questions.